



Echelon Health: world-leading preventative health assessment provider

Echelon Health, located at the heart of Harley Street Medical Area, is one of the world's leading providers of preventative health assessments

Echelon Health utilises only the most advanced and cutting-edge scanning technology, which combined with the talent of its renowned radiologists and doctors, enables it to detect tumours as small as 1-2mm and, subsequently, detect up to 94% of the causes of preventable death.

Echelon Health's preventative health assessments are carried out with the sole purpose of (i) detecting disease at its earliest stage (usually before any symptoms) to maximise the chances of effective treatment and avoid early death, and (ii) to allow its clients to establish a baseline for the condition of their health and recommend an appropriate onward lifestyle plan.

Echelon Health is unique in that it not only actually looks under the 'bonnet' to see inside you in incredible detail but also recognises that no single scanner can assess for all diseases, so it utilises a combination of advanced MRI, CT and ultrasound technology, alongside comprehensive blood tests such as tumour markers to give clients optimum accuracy in their results.

"The service they're providing at present is, in my opinion, the best that can be achieved in current practice with existing knowledge," said Dr David Wilson, past president of the British Institute of Radiology

Echelon Health benefits from having its own in-house Medical Advisory Committee, which comprises a large



Echelon Health prides itself on excellence in customer care, and client safety, wellbeing and comfort are prioritised

network of leading consultants drawn from eminent teaching hospitals who advise Echelon Health on best practice and provide knowledge on the most up-to-date medical science, helping it achieve its aim of remaining at the forefront of preventative medicine.

The clinic's impressive Harley Street establishment, combined with friendly and extremely attentive staff, means your day at Echelon Health is guaranteed to be pleasant and comfortable. Echelon Health prides itself on excellence in customer care, and client safety, wellbeing and comfort are prioritised in its customer service approach.

Echelon Health offers a range of health assessments including cancer-specific assessments such as: core cancer, prostate cancer, lung cancer, pancreatic cancer and colorectal cancer; vital organ assessments such as healthy heart and



healthy brain; and gender-specific assessments such as the 'well woman', which assesses for the main causes of female cancer death. The clinic also offers probably the most comprehensive assessment for long Covid-19 as well as an online neurocognitive brain assessment, which could help detect the early onset symptoms of Alzheimer's and dementia.

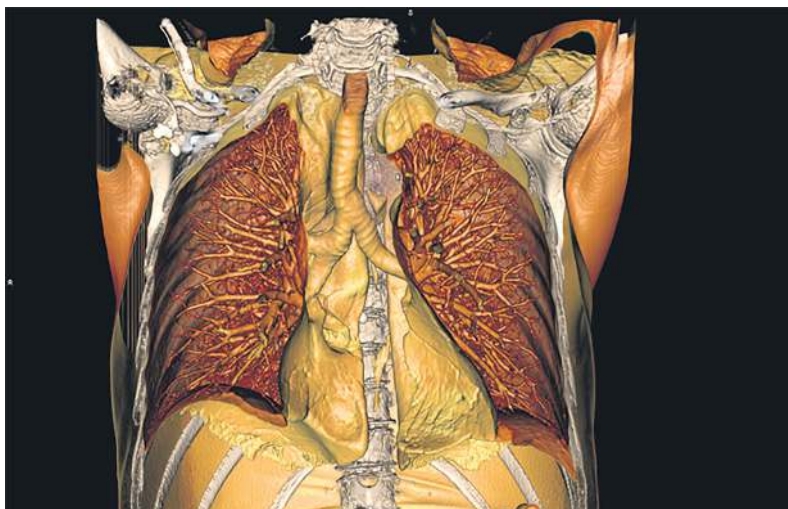
The sole purpose is to save lives through early detection, and success stories are what fuels Echelon Health's team.

Nick Finegold, CEO, Curation Corp, is just one of the many lives saved through innovative preventive health assessments: Nick was diagnosed by Echelon Health with a cerebral arteriovenous fistula in his brain, which almost certainly would have resulted in a catastrophic brain

haemorrhage at some stage. This fistula was causing him no symptoms and would have been missed in a normal medical check-up. Post diagnosis, Nick was immediately referred by Echelon Health to one of the best specialists in the country and underwent a successful procedure a few days later.

In addition to its area-specific health assessments, Echelon Health offers its popular comprehensive platinum and gold assessments and its evergreen monthly membership, which consists of a bespoke set of scans arranged over a period of time for a fixed monthly fee.

Readers will benefit from an exclusive 10% discount across all of Echelon Health's heart and cancer-focused preventative health assessments until the end of June 2021



 echelon health

T: 020 7580 7688
E: info@echelon.health
echelon.health